

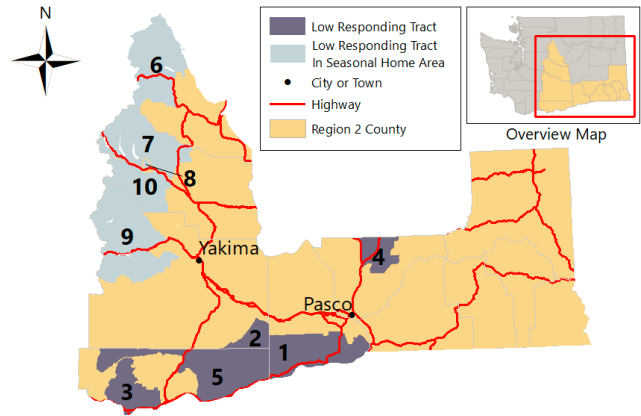
## Region 2: Central & Southeast Washington

Asotin, Benton, Chelan, Columbia, Douglas, Franklin, Garfield, Kittitas, Klickitat, Walla Walla, Whitman & Yakima counties

### Tracts with Low Self-Response Rates

Find the following information in the table below:

1. The 2020 Census tract number, the county in which this tract is located, and the nearest city/place to that Census tract (*Note: Some tracts have been displayed with an enlarged point to be viewable at the regional scale*)
2. The self-response rate of this tract to date
3. The "hard-to-survey" populations contributing to a potentially lower response rate for that tract as identified by the Census Bureau
4. The 2020 Census outreach and education coalition partners located nearest to that tract and any other helpful demographic geographic characteristics that may facilitate targeted outreach



Map #	Tract # County Nearest City/Place	Response Rate	Predicted Low Response Factors (per Census Bureau)	Nearest Coalition Partners and Relevant Tract Features
1	Tract: 116 County: Benton City/Place: Paterson	16.1%  Difference from 2010 Mail-in: -53.1%	40% Latino 55% white 26% renters 35% no internet \$60,700 median household income 22% foreign born 72% Update Leave	Nuestra Casa, Tri-Cities Census Coalition, Tri-Cities Counts, Tri-Cities LULAC Council
2	Tract: 27.01 County: Yakima City/Place: Mabton	24.1%  Difference from 2010 Mail-in: -46.1%	87% Latino 12% white 22% below federal poverty level 28% no internet \$43,100 median household income 34% foreign born 59% Update Leave	Nuestra Casa, Yakama El Censo, La Casa Hogar, APIC-YKM
3	Tract: 9502 County: Klickitat City/Place: Dallesport	27.3%  Difference from 2010 Mail-in: -50.5%	86% white 43% non-family households 28% no internet 23% vacant 30% renters 39% Update Leave	
4	Tract: 208.02 County: Franklin City/Place: Connell	33.9%  Difference from 2010 Mail-in: -42.6%	53% Latino 39% white 44% renters 19% below federal poverty level 26% no internet 51% Update Leave	New Hope (In Region 1)
5	Tract: 9501.01 County: Klickitat City/Place: Roosevelt	35%  Difference from 2010 Mail-in: -49.1%	85% white 36% renters 19% renters \$44,200 median household income 21% no internet 15% vacant	Northwest Communities Education Center, Nuestra Casa

## Response Rates for Native Communities

This table highlights the response rates in tribal areas across Central/SE Washington. Where data are available, low response factors listed below display relevant statistics for those living in the listed Tribe's lands (including reservation and off-reservation trust land).

Tribe	County	Response Rate	Predicted Low Response Factors (per Census Bureau)
Yakama Indian Reservation	Klickitat/Yakima	47.9% Difference from 2010 Mail-In: -10.2%	25.7% American Indian/Alaska Native 58% Latino 39.5% renters \$45,000 median household income 26.2% below poverty level 27.9% no internet

## Tracts with Relatively High Percentages of Seasonally Vacant Units *and* Low Response Rates

This table highlights tracts with low self-response rates to date that contain a relatively high percentage (>30%) of seasonally vacant units (e.g., summer homes, second residences, cabins) where many respondents likely have a "usual home elsewhere," targeted outreach may not be effective, and Census Bureau staff will classify many of the seasonally vacant homes during nonresponse follow-up.

Map #	Tract # County	Response Rate
6	Tract: 9602.03 County: Chelan City/Place:	14.2%
7	Tract: 9751.01 County: Kittitas City/Place: Easton	14.4%
8	Tract: 9751.04 County: Kittitas City/Place: Cle Elum	19.6%
9	Tract: 30.03 County: Yakima City/Place: Tampico	30.9%
10	Tract: 9752.01 County: Kittitas City/Place: Cliffdell	32.3%

## Additional

The following tracts exhibit low response rates but also contain schools, military bases and other facilities whose residents will be enumerated via the Group Quarters or other Census operations, so targeted outreach within these tracts may not be as effective as in other tracts with low response rates.

Tract	County	Nearest City/Place
1	Whitman	Pullman (Washington State University Campus)