

As of April 13, 2020

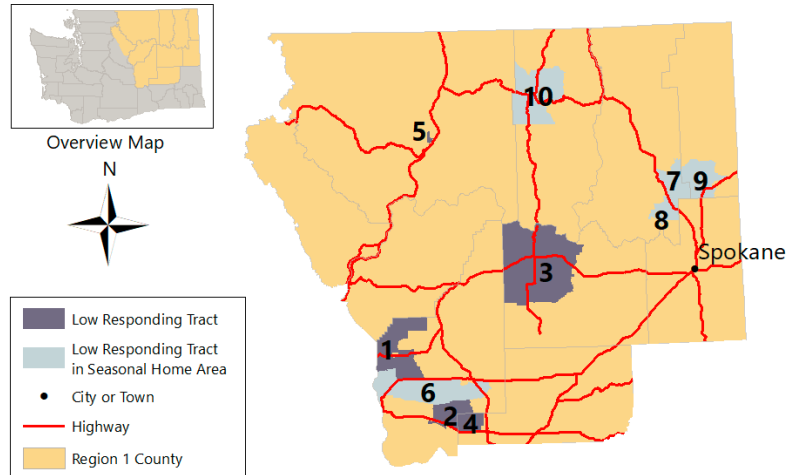
Region 1: Northeastern Washington

Adams, Chelan, Douglas, Ferry, Grant, Lincoln, Okanogan, Pend Oreille, Spokane & Stevens counties

Tracts with Low Self-Response Rates

Find the following information in the table below:

1. The 2020 Census tract number, the county in which this tract is located, and the nearest city/place to that Census tract
2. The self-response rate of this tract to date
3. The "hard-to-survey" populations contributing to a potentially lower response rate for that tract as identified by the Census Bureau
4. The 2020 Census outreach and education coalition partners located nearest to that tract and any other helpful demographic geographic characteristics that may facilitate targeted outreach



Map #	Tract # County Nearest City/Place	Response Rate	Predicted Low Response Factors (per Census Bureau)	Nearest Coalition Partners and Relevant Tract Features
1	Tract: 105 County: Grant City/Place: Quincy	23.6% Difference from 2010 Mail-In: -58.3%	19% Latino 18% no internet 18% renters 10% moved in 2015 or later 78% white 6% below poverty level	Wenatchee CAFE (nearby in Region 1)
2	Tract: 114.01 County: Grant City/Place: Royal City	25.2% Difference from 2010 Mail-In: -57%	60% Latino 38% renters 21% no internet 18% moved in 2015 or later 26% speak Spanish alone 7% below poverty level	Nuestra Casa, Yakama El Censo, La Casa Hogar, APIC-YKM (nearby in Region 1)
3	Tract: 9603 County: Lincoln City/Place: Wilbur	26.9% Difference from 2010 Mail-In: -57.9%	88% white 21% renters 11% below poverty level 15% no internet	
4	Tract: 9503.02 County: Adams City/Place: Othello	28.6% Difference from 2010 Mail-In: -47.6%	76% Latino 25% speak Spanish alone 36% renters 34% no internet 25% below poverty level	Nuestra Casa, Yakama El Censo, La Casa Hogar, APIC-YKM (nearby in Region 1)
5	Tract: 9706.02 County: Okanogan City/Place: Omak	31.3% Difference from 2010 Mail-In: -43.3	14% Latino 5% American Indian/Alaska Native 33% renters 21% below poverty level	Adjacent to Colville Indian Reservation

Response Rates for Native Communities

This table highlights the response rates in tribal areas across NE Washington (Region 1).

Tribe	County	Response Rate
Confederated Tribes Of The Colville Reservation	Ferry/Okanogan	12.7%
Kalispel Tribe Of Indians	Pend Oreille	13.2%
Spokane Tribe of Indians	Spokane/Stevens	8.3%

Tracts with Relatively High Percentages of Seasonally Vacant Units *and* Low Response Rates

This table highlights tracts with low self-response rates to date that contain a relatively high percentage (>30%) of seasonally vacant units (e.g., summer homes, second residences, cabins) where many respondents likely have a “usual home elsewhere,” targeted outreach may not be effective, and Census Bureau staff will classify many of the seasonally vacant homes during nonresponse follow-up.

Map #	Tract # County	Response Rate
6	Tract: 107 County: Grant City/Place: George	23.3%
7	Tract: 9513.02 County: Stevens City/Place: Loon Lake	26%
8	Tract: 9513.01 County: Stevens City/Place: Clayton	32%
9	Tract: 9704 County: Pend Oreille	32.8%
10	Tract: 9702 County: Ferry City/Place: Curlew Lake	32.8%