

As of April 27, 2020

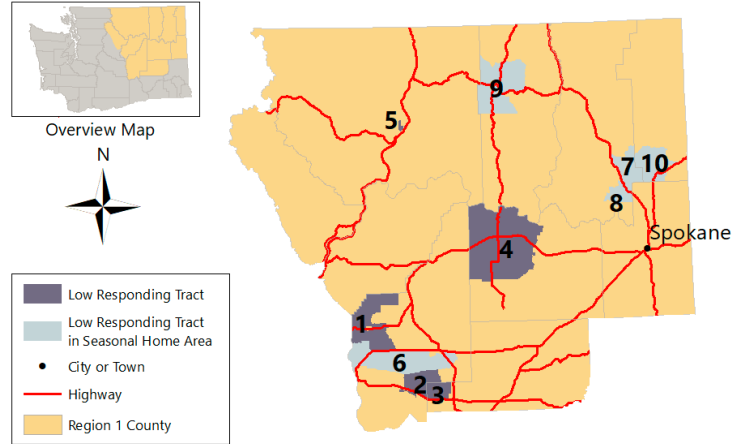
## Region 1: Northeastern Washington

Adams, Chelan, Douglas, Ferry, Grant, Lincoln, Okanogan, Pend Oreille, Spokane & Stevens counties

### Tracts with Low Self-Response Rates

Find the following information in the table below:

1. The 2020 Census tract number, the county in which this tract is located, and the nearest city/place to that Census tract
2. The self-response rate of this tract to date
3. The "hard-to-survey" populations contributing to a potentially lower response rate for that tract as identified by the Census Bureau
4. The 2020 Census outreach and education coalition partners located nearest to that tract and any other helpful demographic geographic characteristics that may facilitate targeted outreach



Map #	Tract # County Nearest City/Place	Response Rate	Predicted Low Response Factors (per Census Bureau)	Nearest Coalition Partners and Relevant Tract Features
1	Tract: 105 County: Grant City/Place: Quincy	28.2%  Difference from 2010 Mail-In: -53.7%	19% Latino 18% no internet 18% renters 10% moved in 2015 or later 78% white 6% below poverty level 18% no internet	Wenatchee CAFE (nearby in Region 1)
2	Tract: 114.01 County: Grant City/Place: Royal City	28.9%  Difference from 2010 Mail-In: -53.3%	60% Latino 38% renters 21% no internet 18% moved in 2015 or later 26% speak Spanish alone 7% below poverty level 19% vacant 21% no internet	Nuestra Casa, Yakama El Censo, La Casa Hogar, APIC-YKM (nearby in Region 1)
3	Tract: 9503.02 County: Adams City/Place: Othello	30%  Difference from 2010 Mail-In: -46.2%	76% Latino 25% speak Spanish alone 36% renters 34% no internet 25% below poverty level	Nuestra Casa, Yakama El Censo, La Casa Hogar, APIC-YKM (nearby in Region 1)
4	Tract: 9603 County: Lincoln City/Place: Wilbur	30.8%  Difference from 2010 Mail-In: -54.0%	88% white 21% renters 11% below poverty level 26% vacant 15% no internet	
5	Tract: 9706.02 County: Okanogan City/Place: Omak	33.4%  Difference from 2010 Mail-In: -41.2%	14% Latino 5% American Indian/Alaska Native 33% renters 21% below poverty level 21% no internet 21% moved in 2015 or later	Adjacent to Colville Indian Reservation

## Response Rates for Native Communities

This table highlights the response rates in tribal areas across NE Washington. Where data are available, low response factors listed below display relevant statistics for those living in the listed Tribe's lands (including reservation and off-reservation trust land).

Tribe	County	Response Rate	Predicted Low Response Factors (per Census Bureau)
Confederated Tribes Of The Colville Reservation	Ferry/Okanogan	15.7%* (No mail-return in 2010)	60.2% American Indian/Alaska Native 32.8% white 37.2% renters 26.4% below poverty level \$39,500 median household income 19.6% vacant 34.6% no internet
Kalispel Indian Reservation	Pend Oreille	14.9%* Difference from 2010 Mail-In: -20.5%	90.5% American Indian/Alaska Native 13.3% below poverty level \$39,400 median household income 13.8% renters 52.5% no internet
Spokane Indian Reservation	Spokane/Stevens	11.5%* (No mail-return in 2010)	83.6% American Indian/Alaska Native 33.0% below poverty level \$32,500 median household income 33.4% renters 43.2% no internet

\*Note: Households within this area are a part of the Census [Update Leave](#) operation. Due to COVID-19, households in Update Leave areas have not received packets from the Census Bureau with information on how to complete the Census which has likely resulted in a lower response rate at this time.

## Tracts with Relatively High Percentages of Seasonally Vacant Units *and* Low Response Rates

This table highlights tracts with low self-response rates to date that contain a relatively high percentage (>30%) of seasonally vacant units (e.g., summer homes, second residences, cabins) where many respondents likely have a “usual home elsewhere,” targeted outreach may not be effective, and Census Bureau staff will classify many of the seasonally vacant homes during nonresponse follow-up.

Map #	Tract # County	Response Rate
6	Tract: 107 County: Grant City/Place: George	27.4%
7	Tract: 9513.02 County: Stevens City/Place: Loon Lake	27.4%
8	Tract: 9513.01 County: Stevens City/Place: Clayton	34.4%
9	Tract: 9702 County: Ferry City/Place: Curlew Lake	34.3%
10	Tract: 9704 County: Pend Oreille	37.2%

Questions? Contact [questions@wecountwashington.org](mailto:questions@wecountwashington.org)